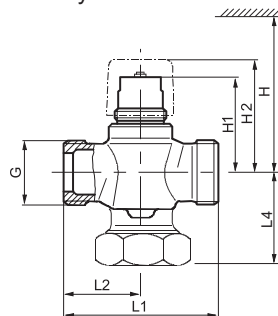


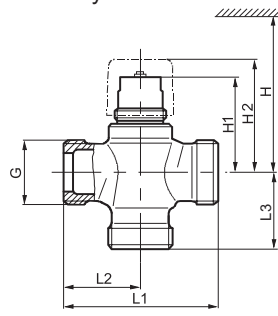
## 2 and 3 way valves



3-way valves



2-way valves



Used in ventilation systems to control the temperature of supplied water in water heaters. For fan coil units, small reheaters and small re-coolers.



Werden in Lüftungsanlagen für Regelung von Wasserzulauf ins Wasserregister. Für Lüfter, kleine Nachheizter und Kühler.



Utilisé dans les systèmes de ventilation pour le contrôle de la température de l'eau dans la batterie à eau chaude. Pour les batteries à eau chaude et froide.



Используется в системах вентиляции для контроля температуры подаваемой воды в водонагревателях. Предназначены для водяных нагревателей и охладителей.

### 2-way valves

Type	DN	G [inch]	H [mm]	H1 [mm]	H2 [mm]	L1 [mm]	L2 [mm]	L4 [mm]	Weight [kg]
VVP45.10-0.25...1.6	10	G½B	> 200	44,9	≈ 54	60	30	20	0,26
VVP45.15-2.5	15	G¾B		44,9	≈ 54	65	32,5	20	0,30
VVP45.20-4	20	G1B		48,9	≈ 58	80	40	24	0,42
VVP45.25-6.3	25	G1¼B		51	≈ 60	80	40	49	0,76
VVP45.25-10		G1½B	62,5	≈ 71	105	52,5	62,5	1,40	
VVP45.32-16	32	G2B	> 280	69	≈ 78	105	52,5	63,5	1,95
VVP45.40-25	40	G2¼B		72	≈ 81	130	65	76	2,75

### 3-way valves

Type	DN	G [inch]	H [mm]	H1 [mm]	H2 [mm]	L1 [mm]	L2 [mm]	L4 [mm]	Weight [kg]
VXP45.10-0.25...1.6	10	G½B	> 200	44,9	≈ 54	60	30	30	0,28
VXP45.15-2.5	15	G¾B		44,9	≈ 54	65	32,5	32,5	0,34
VXP45.20-4	20	G1B		48,9	≈ 58	80	40	40	0,48
VXP45.25-6.3	25	G1¼B		51	≈ 60	80	40	40	0,64
VXP45.25-10	25	G1½B	> 280	62,5	≈ 81	105	52,5	52,5	1,20
VXP45.32-16	32	G2B		69	≈ 88	105	52,5	52,5	1,60
VXP45.40-25	40	G2¼B		72	≈ 91	130	65	65	2,30

VVP45... 2-way	VXP45... 3-way	DN	Connection	k <sub>vs</sub> A→AB [m³/h]	k <sub>vs</sub> 1) B→AB [m³/h]	S <sub>v</sub>
VVP45.10-0.25	VXP45.10-0.25	10	G½B	0,25	0,18	> 50
VVP45.10-0.4	VXP45.10-0.4			0,4	0,28	
VVP45.10-0.63	VXP45.10-0.63			0,63	0,44	
VVP45.10-1	VXP45.10-1			1,0	0,70	
VVP45.10-1.6	VXP45.10-1.6	15	G¾B	1,6	1,12	> 100
VVP45.15-2.5	VXP45.15-2.5			2,5	1,75	
VVP45.20-4	VXP45.20-4	20	G1B	4,0	2,80	
VVP45.25-6.3	VXP45.25-6.3	25	G1¼B	6,3	4,40	
VVP45.25-10	VXP45.25-10			10		
VVP45.32-16	VXP45.32-16	32	G2B		16	
VVP45.40-25	VXP45.40-25	40	G2¼B		25	

1) - Valid for 3-way version only

DN = Nominal size

k<sub>vs</sub> = Nominal flow rate of cold water (5...30 °C) through the fully open valve (H<sub>100</sub>) by a differential pressure of 100 kPa (1 bar)

S<sub>v</sub> = Range ability k<sub>vs</sub> / k<sub>vr</sub>

k<sub>vr</sub> = Smallest k<sub>v</sub> value, at which the flow characteristic tolerances can still be maintained, by a differential pressure of 100 kPa (1 bar)

### Functionl data

Medium temperature	1...110 °C, short-term max. 120 °C
Nominal stroke	5.5 mm
Permissible media	low temperature hot water, chilled water, water with anti-freeze recommendation: water treatment to VDI 2035